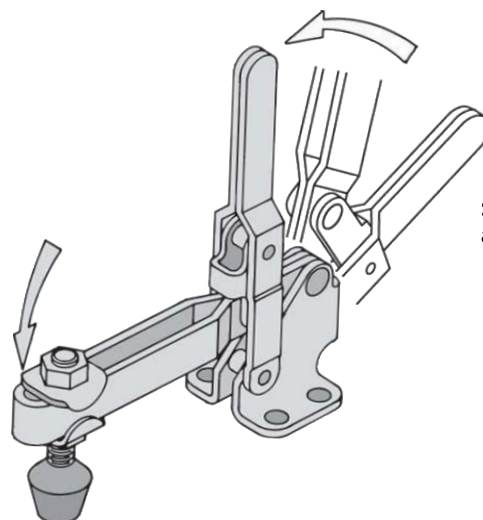


VERTICAL-HANDLE TOGGLE CLAMPS



Sizes marked * are also available in stainless steel



100 lbs*

200 lbs*

500 lbs*

750 lbs*

1000 lbs

Wide Opening

Clamping arm opens past 90° for excellent loading clearance. Most-popular and widest-range series of vertical-handle hold-down clamps. Choice of flanged or straight base, solid or open arm, and regular or T handle in most of the seven available sizes.

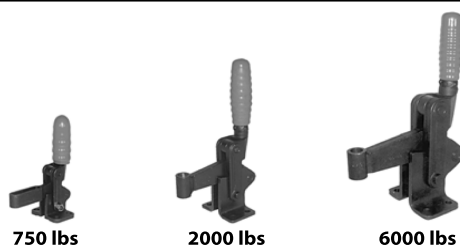


750 lbs

Wide Opening

Automatically Adjusting

Self-adjusting clamp automatically compensates for different workpiece heights without resetting the spindle. Clamping force is always consistent. Wide opening.



750 lbs

2000 lbs

6000 lbs

Wide Opening – Heavy-Duty

Heavy-duty production clamps designed for extreme durability. Available either as complete clamps or as basic mechanisms for adding custom clamping arms or handles. Choice of four sizes.

CONTINUED ON NEXT PAGE

VERTICAL-HANDLE TOGGLE CLAMPS

CONTINUED FROM PREVIOUS PAGE



150 lbs*



350 lbs*



750 lbs*

Low Profile

Extremely compact low-profile clamps with a unique finger-grip T handle. Available in three sizes.



100 lbs*



250 lbs



625 lbs



850 lbs

Low Arm

Simple, easy-opening clamps with excellent arm reach. Extends farther over workpiece than any clamp its size. Choice of flanged or straight base, and solid or open arm. Arm opens 83°. Available in seven sizes, the largest three forged.



1500 lbs



2500 lbs



5000 lbs



100 lbs*



250 lb



625 lbs



850 lbs

High Arm

Simple, easy-opening clamps with extra arm height. Choice of flanged or straight base, and solid or open arm. Arm opens 83°. Available in seven sizes, the largest three forged.



1500 lbs



2500 lbs



5000 lbs



1000 lbs

Vertical Handle Cam Clamps

Wide-opening clamp that locks by spiral-cam action rather than toggle action. Solid arm, flanged base.

VERTICAL-HANDLE TOGGLE CLAMPS

INFO+: SEE PAGE 415 FOR MATERIAL SPECIFICATIONS

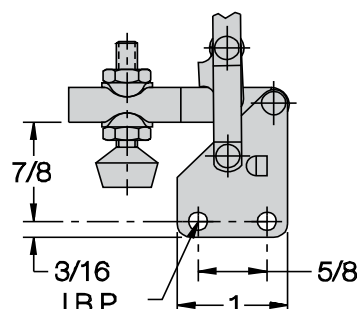
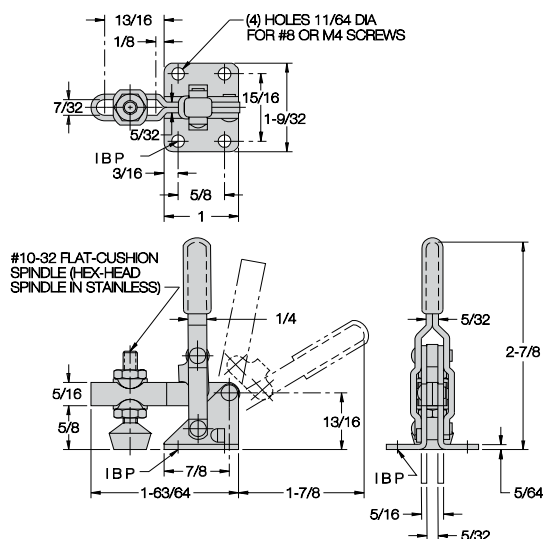


CL-150-VTC Open Arm, Flanged Base

Smallest wide-opening hold-down clamp available. Open arm provides adjustable spindle location. Arm opens 100° while handle moves 56°. Supplied with #10-32 flat-cushion spindle CL-316112-FC and (2) CL-3166-TW flanged washers. Shipping weight 0.2 lbs.

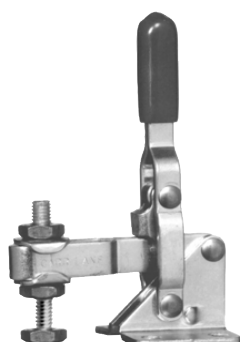
Holding capacity:

100 lbs



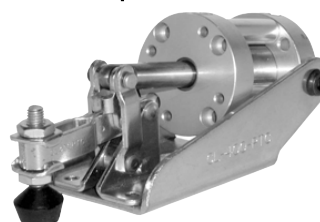
CL-151-VTC Straight Base

Also available
in stainless steel...



CL-150-VTC-S

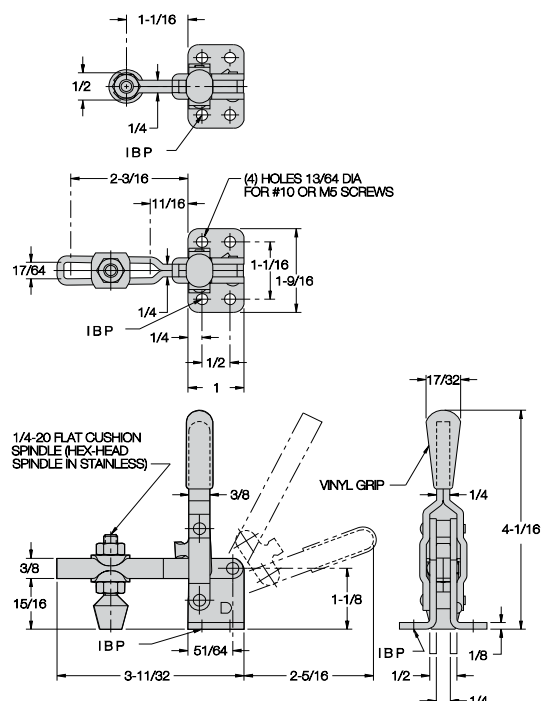
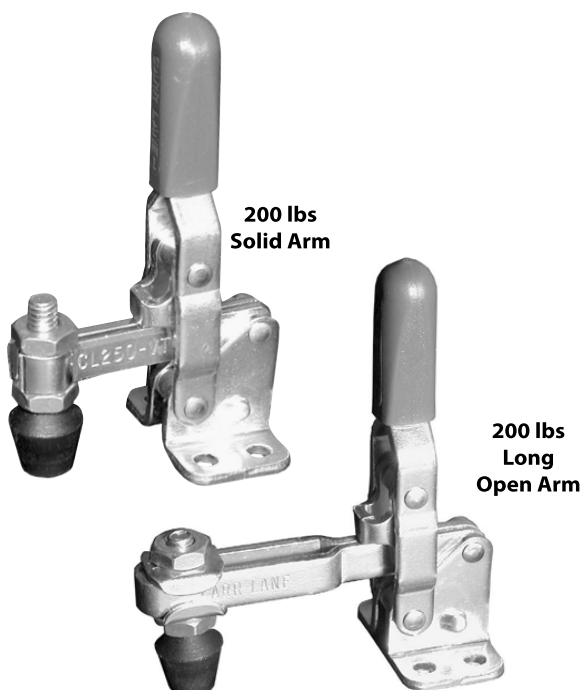
Also available
air powered...



CL-400-PTC

VERTICAL-HANDLE TOGGLE CLAMPS

INFO+: SEE PAGE 415 FOR MATERIAL SPECIFICATIONS



CL-250-VTC CL-253-VTC

Solid Arm, Flanged Base

Open Arm, Flanged Base

Small-yet-powerful clamp available in several configurations. Choose either a solid arm, or a long open arm for spindle adjustment. Arm opens 117° while handle moves 69°. Supplied with 1/4-20 short flat-cushion spindle CL-14112-FC. Open-arm version supplied with (2) CL-148-TW flanged washers. Shipping weight 0.4 lbs.

Holding capacity:

200 lbs

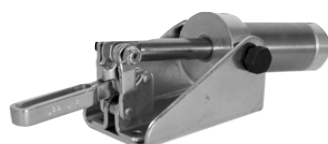
Also available in stainless steel...



CL-250-VTC-S

CL-253-VTC-S

Also available air powered



CL-500-PTC

VERTICAL-HANDLE TOGGLE CLAMPS

INFO+: SEE PAGE 415 FOR MATERIAL SPECIFICATIONS

200 lbs
Solid Arm
With Safety Lock



200 lbs
Long Open Arm
With Safety Lock



CL-250-LVTC

Solid Arm, Flanged Base

CL-253-LVTC

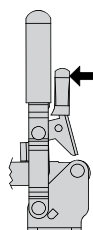
Long, Open Arm, Flanged Base

INFO+: Same as the wide-opening toggle clamps shown on page 468, except with our unique safety-lock feature. This safety lock automatically engages when the clamp is closed, then remains locked until manually disengaged by pressing the handle. This prevents the clamp from being accidentally opened by bumping the handle.

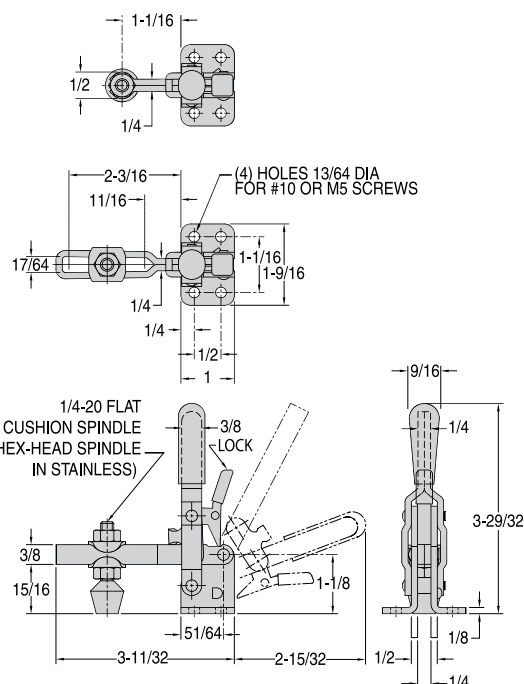
Choose either a solid arm, or a long open arm for spindle adjustment. Arm opens 117° while handle moves 69°. Supplied with 1/4-20 short flat-cushion spindle CL-14112-FC. Open-arm version supplied with (2) CL-148-TW flanged washers. Shipping weight 0.4 lbs.

Holding capacity:

200 lbs



Press Lever To Unlock



VERTICAL-HANDLE TOGGLE CLAMPS

INFO+: SEE PAGE 415 FOR MATERIAL SPECIFICATIONS



**500 lbs
Solid Arm**



**500 lbs
Open Arm**

CL-350-VTC

Solid Arm, Flanged Base

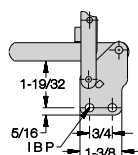
CL-450-VTC

Open Arm, Flanged Base

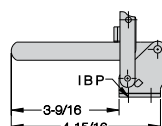
Most-popular wide-opening clamp available in many configurations. Choose either a solid arm, or an open arm for spindle adjustment (extra-long arms also available). Arm opens 100° while handle moves 60°. Accepts any 5/16-18 short spindle. Solid-arm versions supplied with a CL-518000-BR bolt retainer. Open-arm versions supplied with (2) CL-51610-TW flanged washers. Shipping weight 0.8 lbs.

Holding capacity:

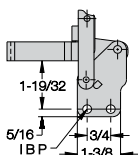
500 lbs



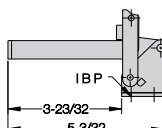
**CL-351-VTC
Solid Arm
Straight Base**



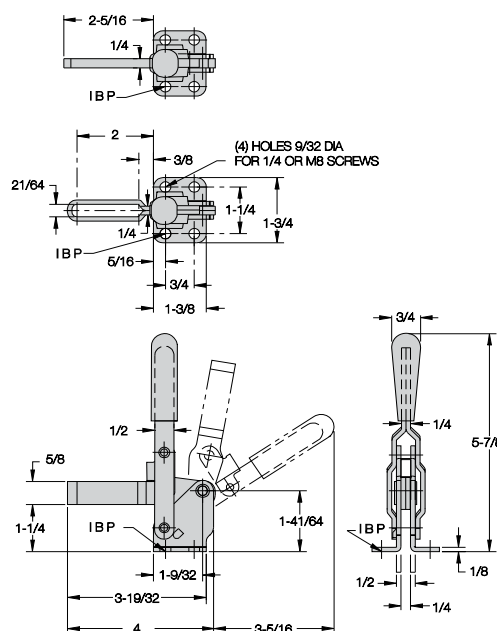
**CL-353-VTC
Long Solid Arm
Flanged Base**



**CL-451-VTC
Open Arm
Straight Base**



**CL-453-VTC
Long Open Arm
Flanged Base**



**Also available
in stainless steel...**



CL-450-VTC-S

**Also available
air powered...**



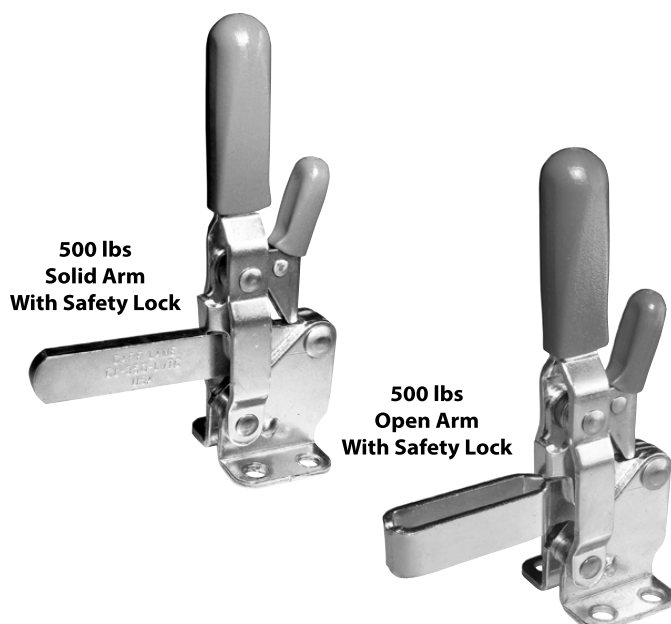
**CL-1001-PTC
Solid Arm**



**CL-1000-PTC
Open Arm**

VERTICAL-HANDLE TOGGLE CLAMPS

INFO+: SEE PAGE 415 FOR MATERIAL SPECIFICATIONS



CL-350-LVTC CL-450-LVTC

Solid Arm, Flanged Base

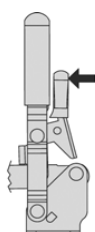
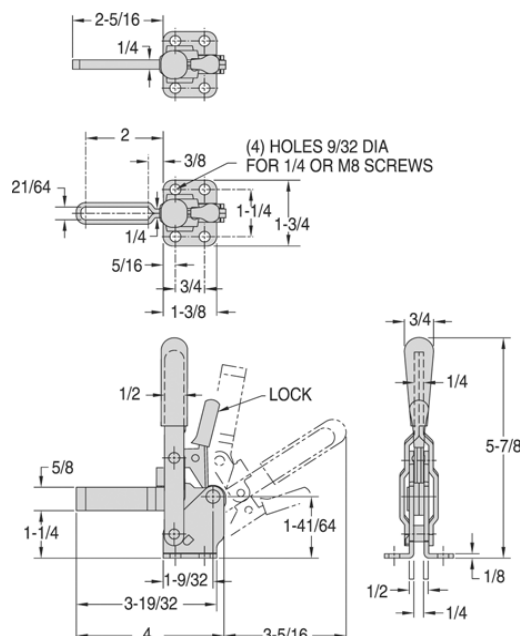
Open Arm, Flanged Base

INFO+: Same as the wide-opening toggle clamps shown on page 476, except with our unique safety-lock feature. This safety lock automatically engages when the clamp is closed, then remains locked until manually disengaged by pressing the handle. This prevents the clamp from being accidentally opened by bumping the handle.

Choose either a solid arm, or an open arm for spindle adjustment. Arm opens 100° while handle moves 60°. Accepts any 5/16-18 short spindle. Solid-arm version supplied with CL-518000-BR bolt retainer. Open-arm version supplied with (2) CL-51610-TW flanged washers. Shipping weight 0.9 lbs.

Holding capacity:

500 lbs



Press Lever To Unlock

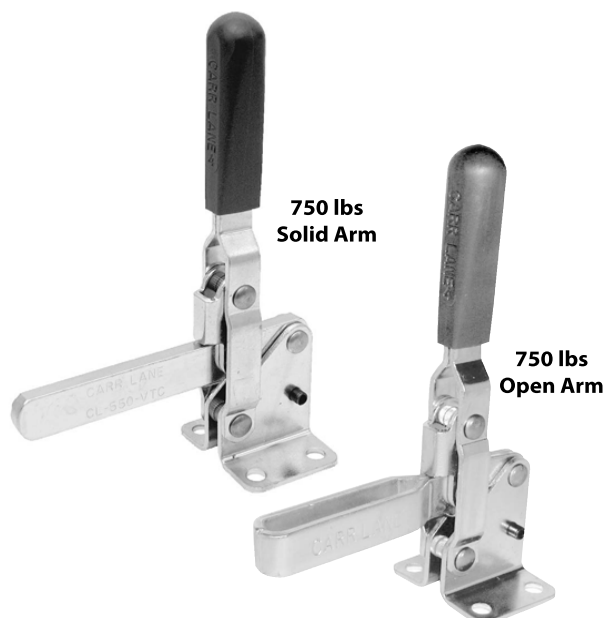
Also available
in stainless steel...



CL-450-LVTC-S

VERTICAL-HANDLE TOGGLE CLAMPS

INFO+: SEE PAGE 415 FOR MATERIAL SPECIFICATIONS



CL-550-VTC

Solid Arm, Flanged Base

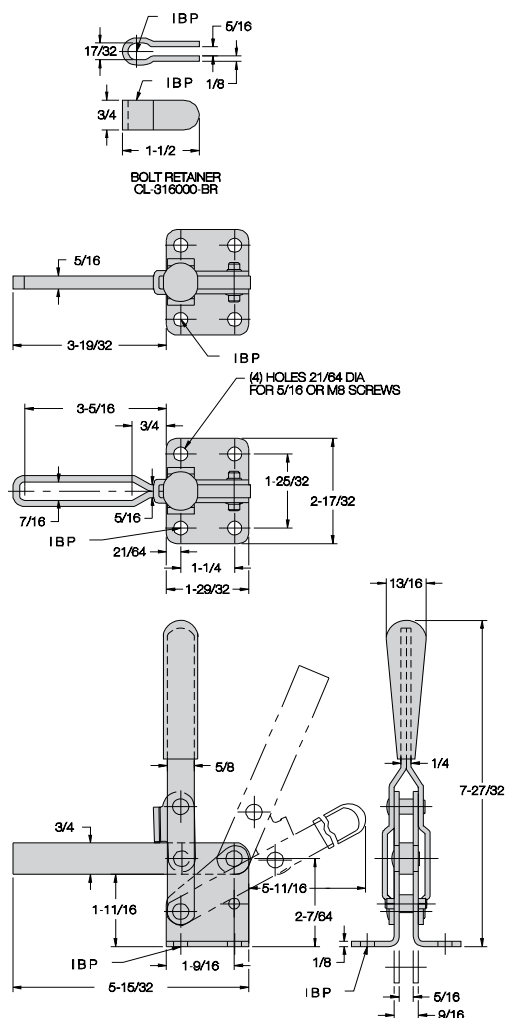
CL-650-VTC

Open Arm, Flanged Base

Larger wide-opening clamp available in several configurations. Choose either a solid arm, or an open arm for spindle adjustment. Arm opens 106° while handle moves 58°. Accepts any 3/8-16 spindle. Solid-arm version supplied with a CL-316000-BR bolt retainer. Open-arm version supplied with (2) CL-3811-TW flanged washers. Shipping weight 1.3 lbs.

Holding capacity:

750 lbs



**Also available with
patented automatic adjustment!**



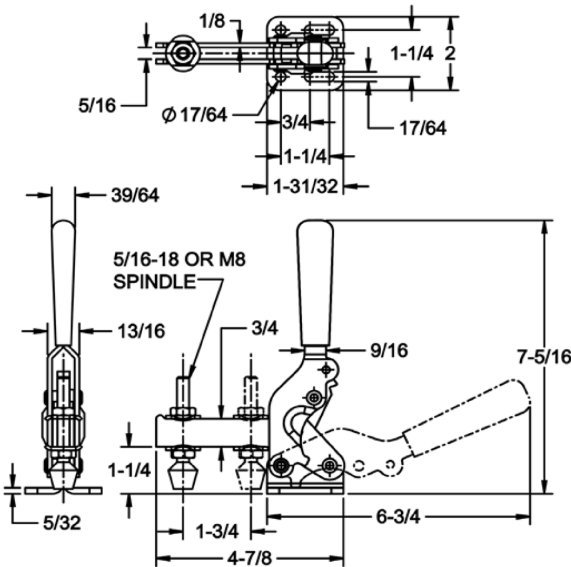
**Also available
in stainless steel...**



HIGH CAPACITY TOGGLE CLAMPS

INFO+: SEE PAGE 415 FOR MATERIAL SPECIFICATIONS

Quick acting High-Capacity Toggle Clamp with almost vertical clamping. Featuring improved clearance for safety and hardened bushings at critical pivot points. Spindle configurations are available in both inch and metric. These clamps also have a slotted base allowing both inch and metric hole mounting options.



INCH

Part Number	DESCRIPTION	HOLDING CAPACITY (lbs)	HANDLE COLOR	SHIPPING WEIGHT (lbs)
CL-1000-HCTC	Open Arm, Flange Base	1000	Green	1.25
CL-1000-HCTC-R	Open Arm, Flange Base	1000	Red	1.25
CL-1000-HCTC-S	Open Arm, Flange Base	1000	Green	1.25
CL-600-HCTC	Open Arm, Flange Base	600	Green	.56
CL-600-HCTC-R	Open Arm, Flange Base	600	Red	.56
CL-600-HCTC-S	Open Arm, Flange Base	600	Green	.56

METRIC

Part Number	DESCRIPTION	HOLDING CAPACITY (lbs)	HANDLE COLOR	SHIPPING WEIGHT (lbs)
CLM-1000-HCTC	Open Arm, Flange Base	4448	Green	0.57
CLM-1000-HCTC-R	Open Arm, Flange Base	4448	Red	0.57
CLM-1000-HCTC-S	Open Arm, Flange Base	4448	Green	0.57
CLM-600-HCTC	Open Arm, Flange Base	2669	Green	.25
CLM-600-HCTC-R	Open Arm, Flange Base	2669	Red	.25
CLM-600-HCTC-S	Open Arm, Flange Base	2669	Green	.25

VERTICAL-HANDLE TOGGLE CLAMPS

INFO+: SEE PAGE 415 FOR MATERIAL SPECIFICATIONS

750 lbs
Open Arm
With Safety Lock



CL-650-LVTC

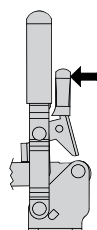
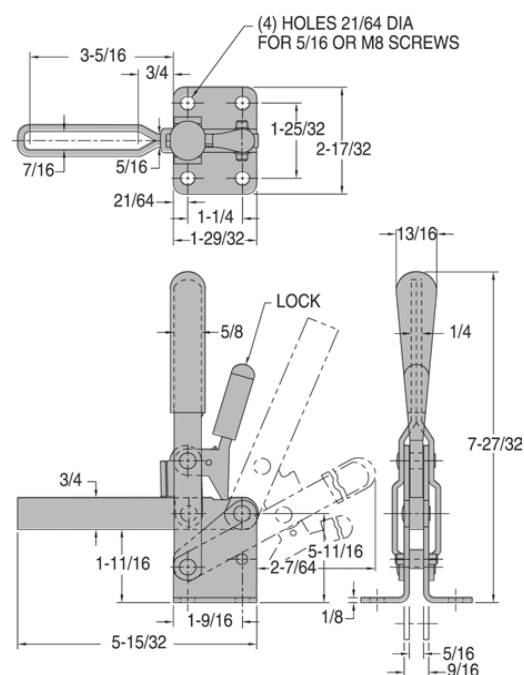
Open Arm, Flanged Base

INFO+: Same as the wide-opening toggle clamps shown on page 472, except with our unique safety-lock feature. This safety lock automatically engages when the clamp is closed, then remains locked until manually disengaged by pressing the handle. This prevents the clamp from being accidentally opened by bumping the handle.

Open arm provides spindle adjustment. Arm opens 106° while handle moves 58°. Accepts any 3/8-16 spindle. Supplied with (2) CL-3811-TW flanged washers. Shipping weight 1.4 lbs.

Holding capacity:

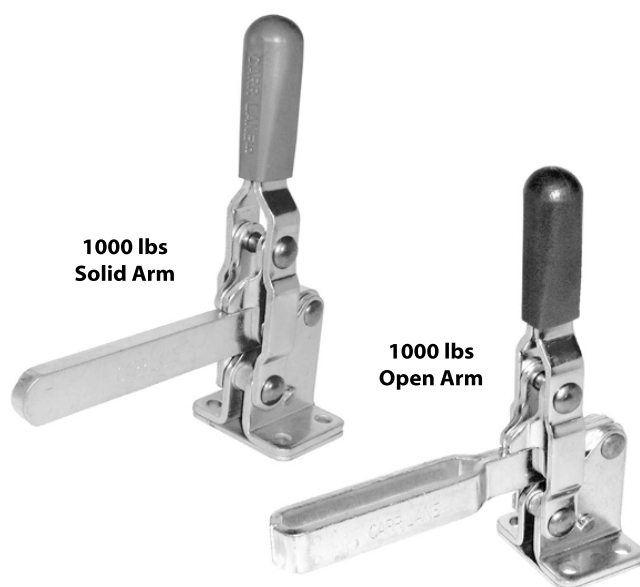
750 lbs



Press Lever To Unlock

VERTICAL-HANDLE TOGGLE CLAMPS

INFO+: SEE PAGE 415 FOR MATERIAL SPECIFICATIONS



CL-750-VTC CL-850-VTC

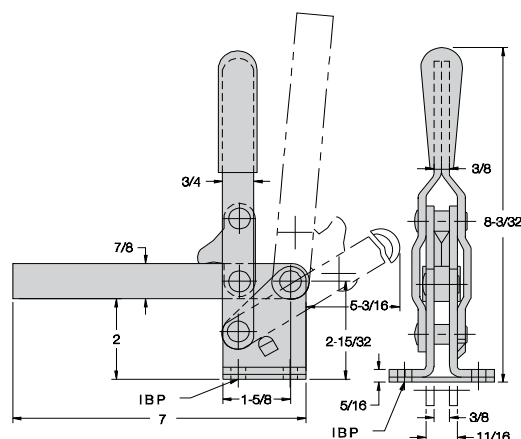
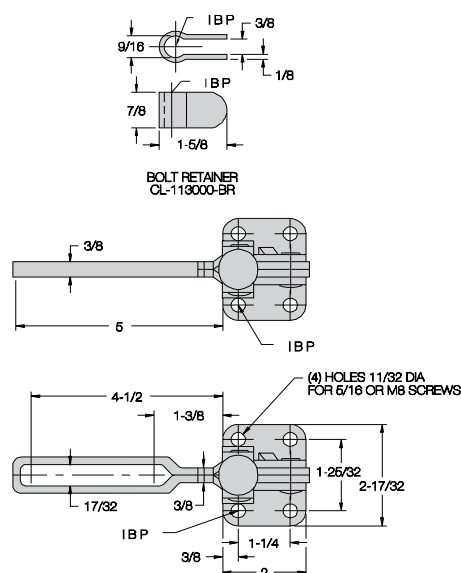
Solid Arm, Flanged Base

Open Arm, Flanged Base

Extra-large wide-opening clamp. Choose either a solid arm, or an open arm for spindle adjustment. Arm opens 120° while handle moves 67°. Accepts any 1/2-13 spindle. Solid-arm version supplied with a CL-113000-BR bolt retainer. Open-arm version supplied with (2) CL-1213-TW flanged washers. Shipping weight 2.5 lbs.

Holding capacity:

1000 lbs



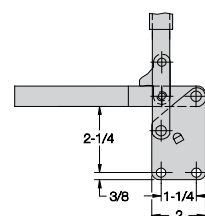
Also available air powered...



CL-2001-PTC
Solid Arm



CL-2000-PTC
Open Arm



CL-851-VTC
Open Arm
Straight Base

VERTICAL-HANDLE TOGGLE CLAMPS

INFO+: SEE PAGE 415 FOR MATERIAL SPECIFICATIONS



**1000 lbs
Open Arm
With Safety Lock**

CL-850-LVTC

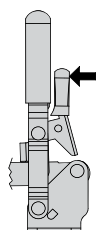
Open Arm, Flanged Base

INFO+: Same as the wide-opening toggle clamps shown on page 480, except with our unique safety-lock feature. This safety lock automatically engages when the clamp is closed, then remains locked until manually disengaged by pressing the handle. This prevents the clamp from being accidentally opened by bumping the handle.

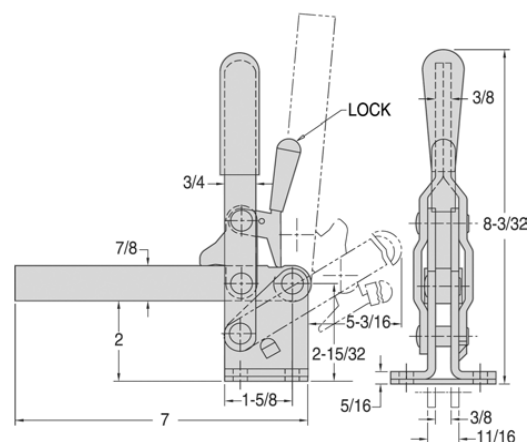
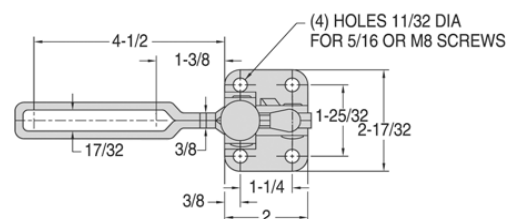
Open arm provides spindle adjustment. Arm opens 120° while handle moves 67°. Accepts any 1/2-13 spindle. Supplied with (2) CL-1213-TW flanged washers. Shipping weight 2.5 lbs.

Holding capacity:

1000 lbs



Press Lever To Unlock



VERTICAL-HANDLE TOGGLE CLAMPS

INFO+: SEE PAGE 415 FOR MATERIAL SPECIFICATIONS



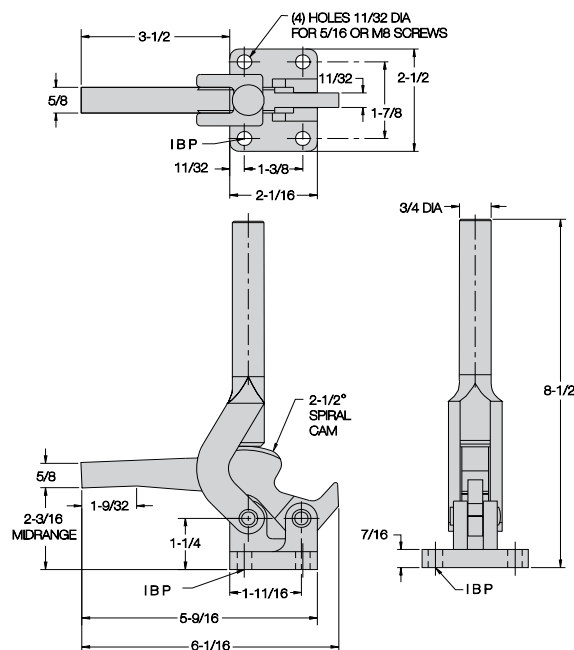
1000 lbs
Cam Action

CL-1000-VCC

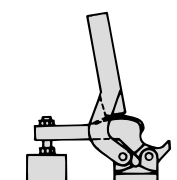
Wide-opening clamp that locks by cam action rather than toggle action. Smooth spiral cam locks securely anywhere within a 3/16-inch clamping range. Rugged cast-steel components are flame hardened at all wear points. Solid arm can be tapped to accept a spindle, or otherwise modified. Shipping weight 2.5 lbs.

Holding capacity:

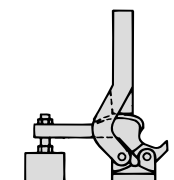
1000 lbs



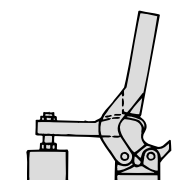
Optional Vinyl Grip
CL-3-HVTC-G



Low Limit



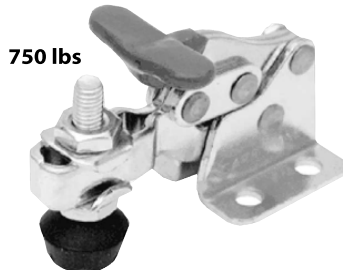
Average Setting



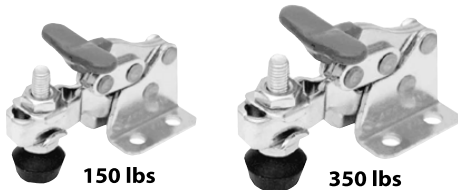
High Limit

VERTICAL-HANDLE TOGGLE CLAMPS

INFO+: SEE PAGE 415 FOR MATERIAL SPECIFICATIONS



750 lbs



150 lbs

350 lbs

Hold-down toggle clamp with a unique finger-grip T handle. Extremely compact design. Open arm provides adjustable spindle location. Arm opens 92° while handle moves 175°.

CL-200-VTC

Miniature-size T-handle clamp. Supplied with #10-32 flat-cushion spindle CL-316112-FC and (2) CL-3166-TW flanged washers. Shipping weight 0.2 lbs.

Holding capacity: 150 lbs

CL-300-VTC

Medium-size T-handle clamp. Supplied with 5/16-18 flat-cushion spindle CL-518208-FC and (2) CL-51610-TW flanged washers. Shipping weight 0.6 lbs.

Holding capacity: 350 lbs

CL-500-VTC

Large-size T-handle clamp. Supplied with 3/8-16 flat-cushion spindle CL-38212-FC and (2) CL-3811-TW flanged washers. Shipping weight 1.3 lbs.

Holding capacity: 750 lbs

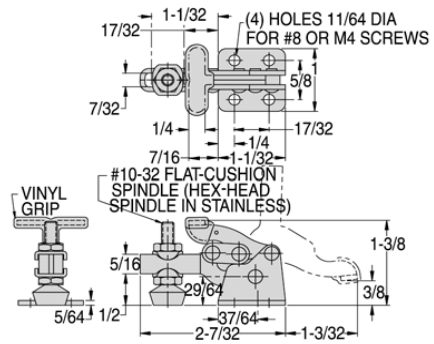
Also available in stainless steel...



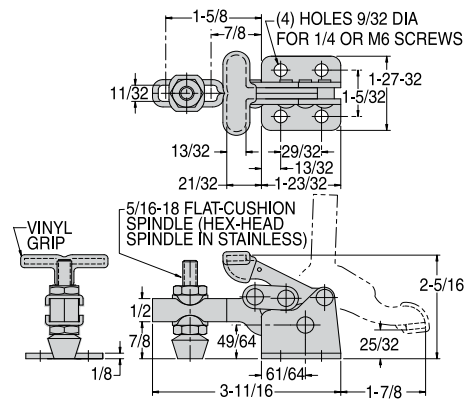
CL-200-VTC-S
150 lbs



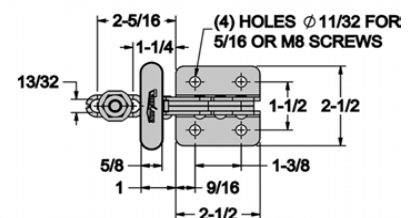
CL-300-VTC-S
350 lbs



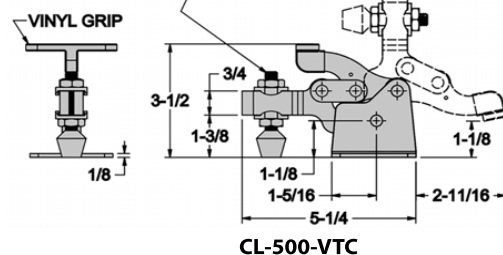
CL-200-VTC



CL-300-VTC



CL-500-VTC

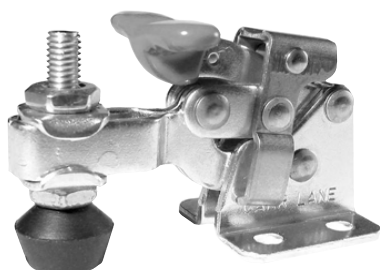


CL-500-VTC

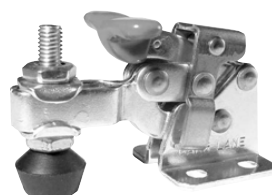
VERTICAL-HANDLE TOGGLE CLAMPS

INFO+: SEE PAGE 415 FOR MATERIAL SPECIFICATIONS

**750 lbs
With Safety Lock**



**150 lbs
With Safety Lock**



**350 lbs
With Safety Lock**

INFO+: Same as our hold-down toggle clamps on page 470, except with our unique safety-lock feature. This safety lock automatically engages when the clamp is closed, then remains locked until manually disengaged by pressing the lever before opening. This prevents the clamp from being accidentally opened by bumping the handle. This clamp has a unique finger-grip T handle. Extremely compact design. Open arm provides adjustable spindle location. Arm opens 92° while handle moves 175°.

CL-200-LVTC

Miniature-size T-handle clamp. Supplied with #10-32 flat-cushion spindle CL-316112-FC and (2) CL-3166-TW flanged washers. Shipping weight 0.2 lbs.

Holding capacity: 150 lbs

CL-300-LVTC

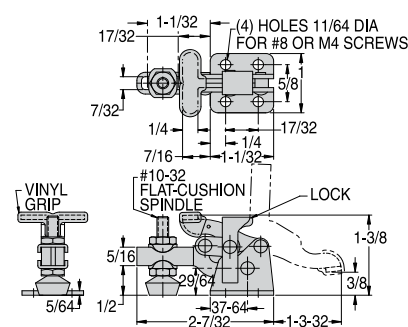
Medium-size T-handle clamp. Supplied with 5/16-18 flat-cushion spindle CL-518208-FC and (2) CL-51610-TW flanged washers. Shipping weight 0.6 lbs.

Holding capacity: 350 lbs

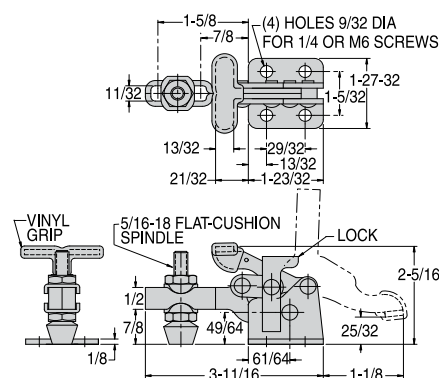
CL-500-LVTC

Large-size T-handle clamp. Supplied with 3/8-16 flat-cushion spindle CL-38212-FC and (2) CL-3811-TW flanged washers. Shipping weight 1.3 lbs.

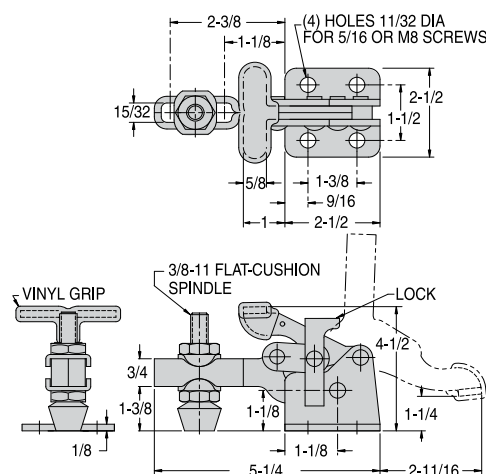
Holding capacity: 750 lbs



CL-200-LVTC



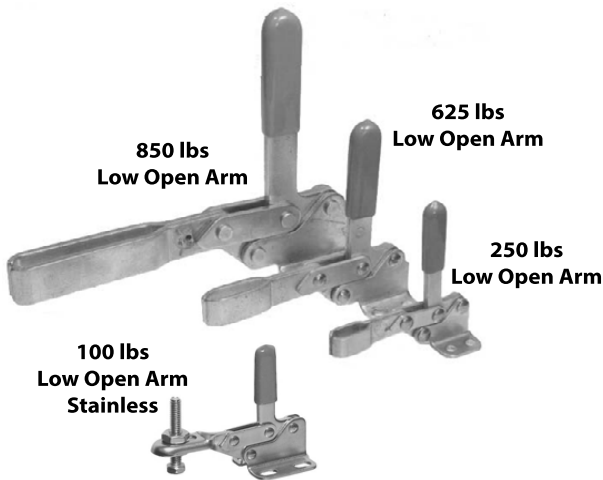
CL-300-LVTC



CL-500-LVTC

VERTICAL-HANDLE TOGGLE CLAMPS

INFO+: SEE PAGE 415 FOR MATERIAL SPECIFICATIONS



Simple, easy-opening clamps with excellent arm reach, extending farther over workpiece than any other clamps their size. Open arm allows spindle adjustment. Arm opens 83° while handle moves 83°. Available in four sizes.

CL-11-TC Low Open Arm, Flanged Base

Miniature clamp in stainless steel. Supplied with #8-32 hex-head spindle CL-832203-SA-S. Shipping weight 0.1 lbs.

Holding capacity: 100 lbs

CL-111-TC Low Open Arm, Flanged Base

Small-size clamp. Accepts any 1/4-20 spindle and (2) CL-147-TW flanged washers. Shipping weight 0.3 lbs.

Holding capacity: 250 lbs

CL-211-TC Low Open Arm, Flanged Base

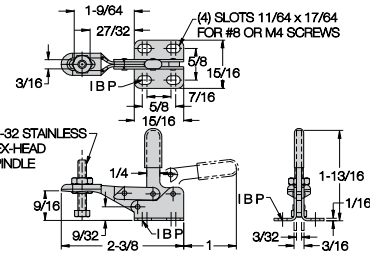
Medium-size clamp. Accepts any 5/16-18 spindle and (2) CL-51610-TW flanged washers. Shipping weight 0.5 lbs.

Holding capacity: 625 lbs

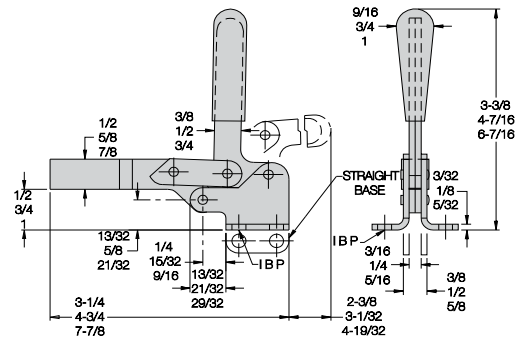
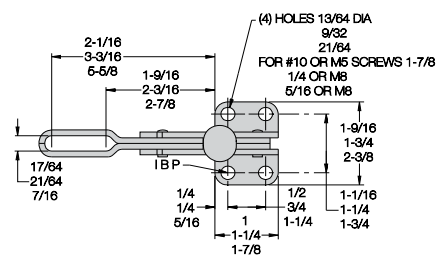
CL-311-TC Low Open Arm, Flanged Base

Large-size clamp. Arm extends a full 6 inches over workpiece. Accepts any 3/8-16 spindle and (2) CL-3811-TW flanged washers. Shipping weight 1.4 lbs.

Holding capacity: 850 lbs



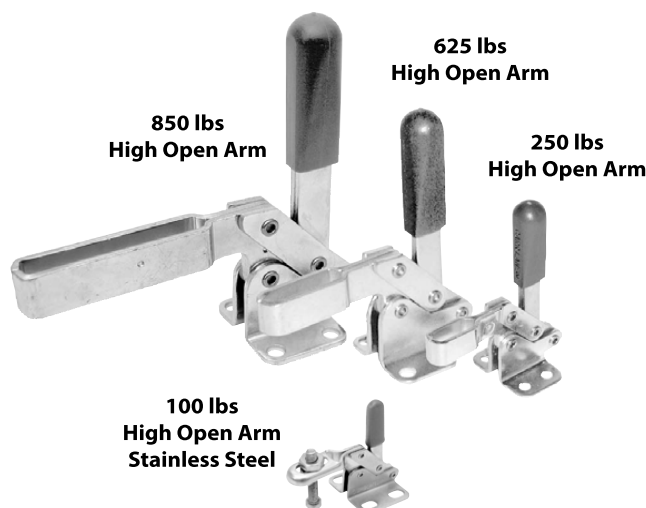
CL-11-TC



CL-111-TC (Top dimension)
CL-211-TC (Middle dimension)
CL-311-TC (Bottom dimension)

VERTICAL-HANDLE TOGGLE CLAMPS

INFO+: SEE PAGE 415 FOR MATERIAL SPECIFICATIONS



Simple, easy-opening clamps with extra arm height. Open arm allows spindle adjustment. Arm opens 83° while handle moves 83°. Available in four sizes.

CL-21-TC

High Open Arm, Flanged Base

Miniature clamp in stainless steel. Supplied with #8-32 hex-head spindle CL-832203-SA-S. Shipping weight 0.1 lbs.

Holding capacity:

100 lbs

CL-101-TC

High Open Arm, Flanged Base

Small-size clamp. Accepts any 1/4-20 spindle and (2) CL-147-TW flanged washers. Shipping weight 0.3 lbs.

Holding capacity:

250 lbs

CL-201-TC

High Open Arm, Flanged Base

Medium-size clamp. Accepts any 5/16-18 spindle and (2) CL-51610-TW flanged washers. Shipping weight 0.5 lbs.

Holding capacity:

625 lbs

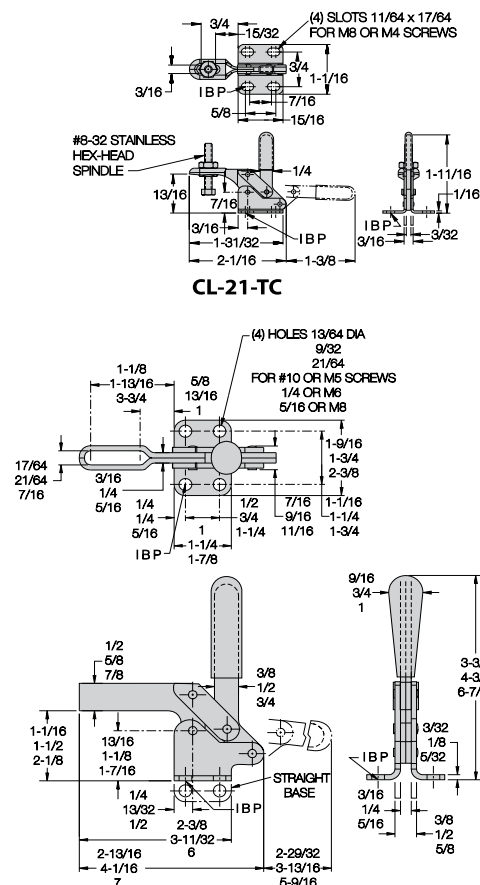
CL-301-TC

High Open Arm, Flanged Base

Large-size clamp. Accepts any 3/8-16 spindle and (2) CL-3811-TW flanged washers. Shipping weight 1.4 lbs.

Holding capacity:

850 lbs



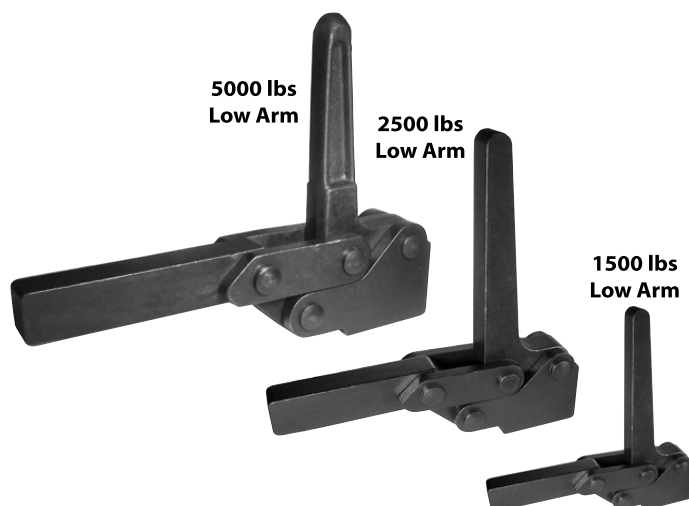
CL-101-TC (Top dimension)

CL-201-TC (Middle dimension)

CL-301-TC (Bottom dimension)

VERTICAL-HANDLE TOGGLE CLAMPS

INFO+: SEE PAGE 415 FOR MATERIAL SPECIFICATIONS



Compact heavy-duty clamps with forged steel handles and clamping arms, available in three sizes. Low clamping arm extends far over workpiece. Simple, easy-opening linkage. Arm opens 83° while handle moves 83°. Weld-on flanged base is optional. To order clamp with flanged base attached, add "S" to part no. (example: CL-45-HDC-121S).

CL-45-HDC-121

Low Arm

Smallest of the three sizes, yet still quite powerful. Shipping weight 2.0 lbs.

Holding capacity: 1500 lbs

CL-50-HDC-121

Low Arm

Medium-size clamp with high strength. Shipping weight 2.5 lbs.

Holding capacity: 2500 lbs

CL-51-HDC-121

Low Arm

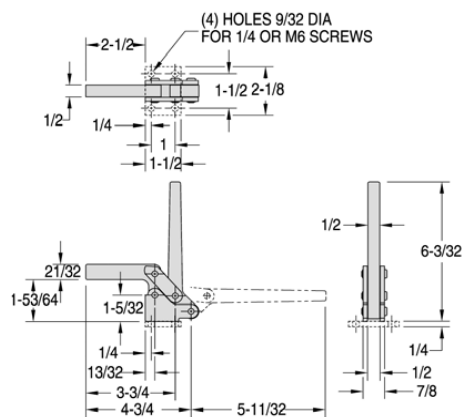
Largest of the three sizes. Shipping weight 5.0 lbs.

Holding capacity: 5000 lbs

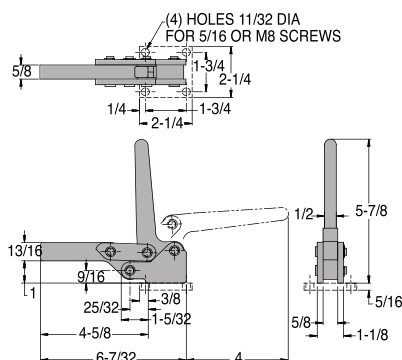
Available with
standard flanged
base attached...



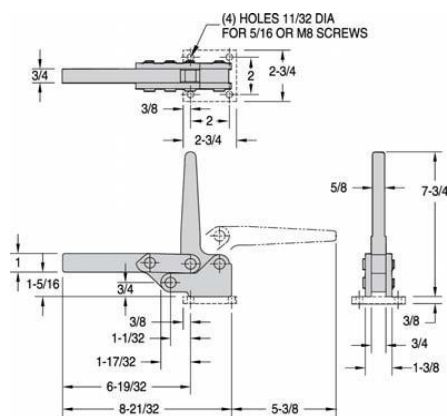
Add "S" to part no.



CL-45-HDC-121



CL-50-HDC-121



CL-51-HDC-121

VERTICAL-HANDLE TOGGLE CLAMPS

INFO+: SEE PAGE 415 FOR MATERIAL SPECIFICATIONS



Compact heavy-duty clamps with forged steel handles and clamping arms, available in three sizes. High clamping arm provides extra room for thick workpieces. Simple, easy-opening linkage. Arm opens 83° while handle moves 83°. Weld-on flanged base is optional. To order clamp with flanged base attached, add "S" to part no. (example: CL-40-HDC-211S).

CL-40-HDC-211

High Arm

Smallest of the three sizes, yet still quite powerful. Shipping weight 2.0 lbs.

Holding capacity:

1500 lbs

CL-60-HDC-211

High Arm

Medium-size clamp with high strength. Shipping weight 2.5 lbs.

Holding capacity:

2500 lbs

CL-61-HDC-211

High Arm

Largest of the three sizes. Shipping weight 5.0 lbs.

Holding capacity:

5000 lbs

Available with standard flanged base attached...



Add "S" to part no.

Also available air powered...



CL-3000-PTC

